



FUJIKURA COMPOSITES

"KRE" series

Precise electro pneumatic converter of pressure feedback type.

■ Features

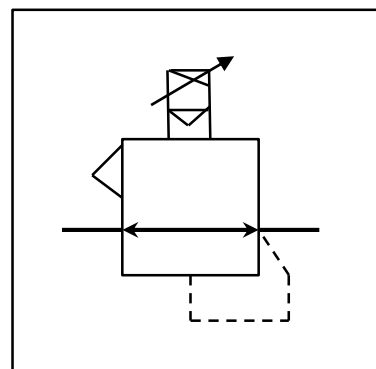
- Feedback control enables further high accuracy air pressure control.
- Excellent pressure characteristics, flow characteristics and stability can be realized by feedback control.
- It is not affected by electric noise, and simultaneous control up to 32 units is possible with one controller.



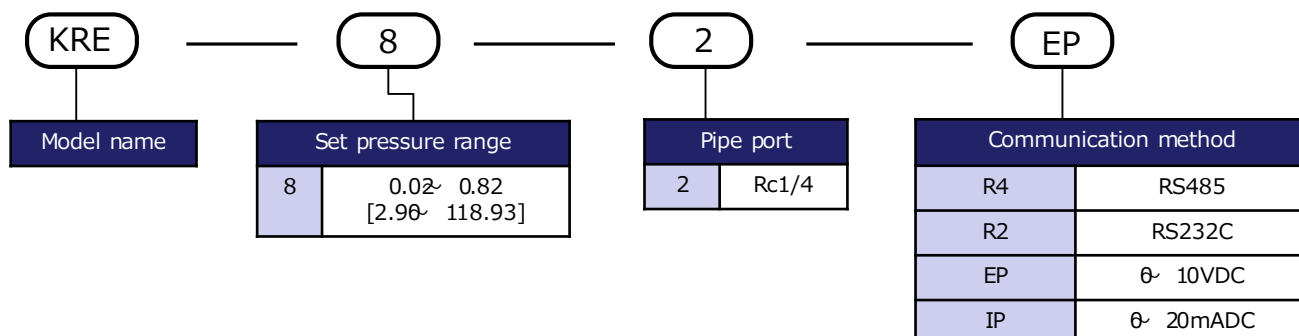
■ Applications

- Tension control with dancer roller.
- Pressure force control of spot welding guns.
- Tension control with air brakes.
- Press control of polishing machines.
- Dispenser control of various fluid.
- Pressure control of air balancers and lifters.
- Pneumatic control of control valves.
- Handling force control of robotic hands.
- Coasting around control in programmed paid spray system.

■ JIS code



■ Model designation





FUJIKURA COMPOSITES

■ Specification

Model name	KRE-8-2-R4	KRE-8-2-R2	KRE-8-2-IP	KRE-8-2-EP	
Working fluid	Clean compressed air				
Set pressure range Mpa[psi]	0.02~ 0.82 [2.9~ 119]				
Supply pressure range Mpa[psi]	0.9 [130.53]MAX setting pressure more than +0.035[5.08]				
Resolution MPa[psi]	0.001 [0.15]				
Repeatability % F.S.	Less than 0.5				
Hysteresis % F.S.	Less than 1.0				
Repeatability % F.S.	Less than ±0.2				
Sensitivity MPa[psi]	1 [145.04]				
Maximum flow rate ℓ /min(ANR)	Less than 350				
Air consumption ℓ /min(ANR)	Less than 3.7				
Operating temperature °C[F]	5~ 50 [41~ 140]				
Pipe port Rc	1/4				
Bracket	Standard equipment				
Size mm[in.]	104[4.09](H)× 75.5[2.977](L)× 102[4.02](W)				
Weight kg[pound]	0.94 [2.07]				
Signal input	Control method	RS485	RS232C	4~ 20mADC	0~ 10VDC
		Keyboard input			
Power-supply voltage VDC	24 ±10%				
Current consumption mADC	less than 10 0				
Others	RS485 Bus Common Mode Voltage	-7~ 12V	-	-	-
	RS485 Bus Load Capacity	32 Devices(MAX)	-	-	-

■ Pressure gauge

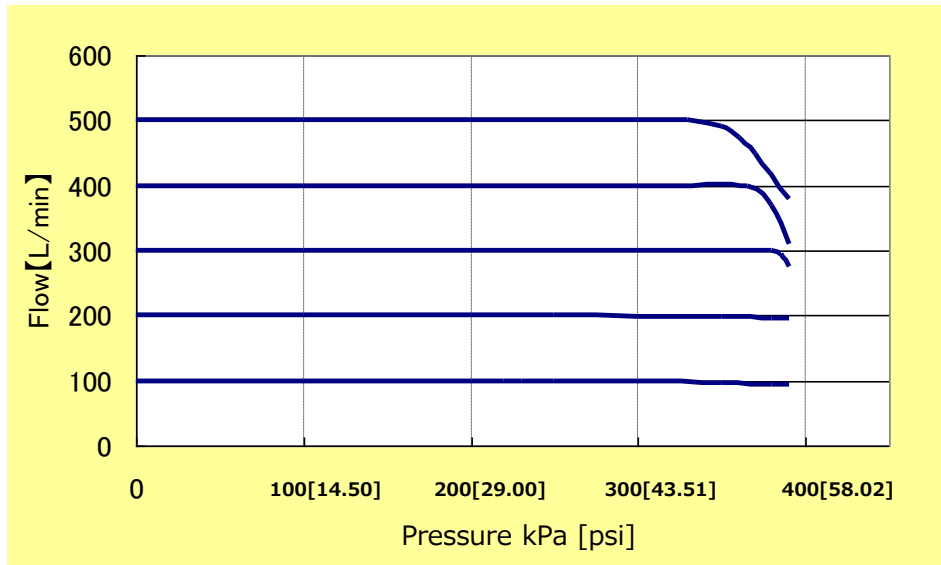
Model	Pressure range	Minimum scale
G025	0~ 0.25MPa [0~36.26psi]	0.005MPa [0.73]
G060	0~ 0.6MPa [0~87.02]	0.01MPa [1.45]
G100	0~ 1.0 [0~145.04]	0.02MPa [2.90]

- Accuracy ±1.0% F.S.
- Pipe port R1/4
- Size Φ51.8mm[in.]
- Size Φ51.8mm [2.39in.]
- Weight 125g [0.28pound]

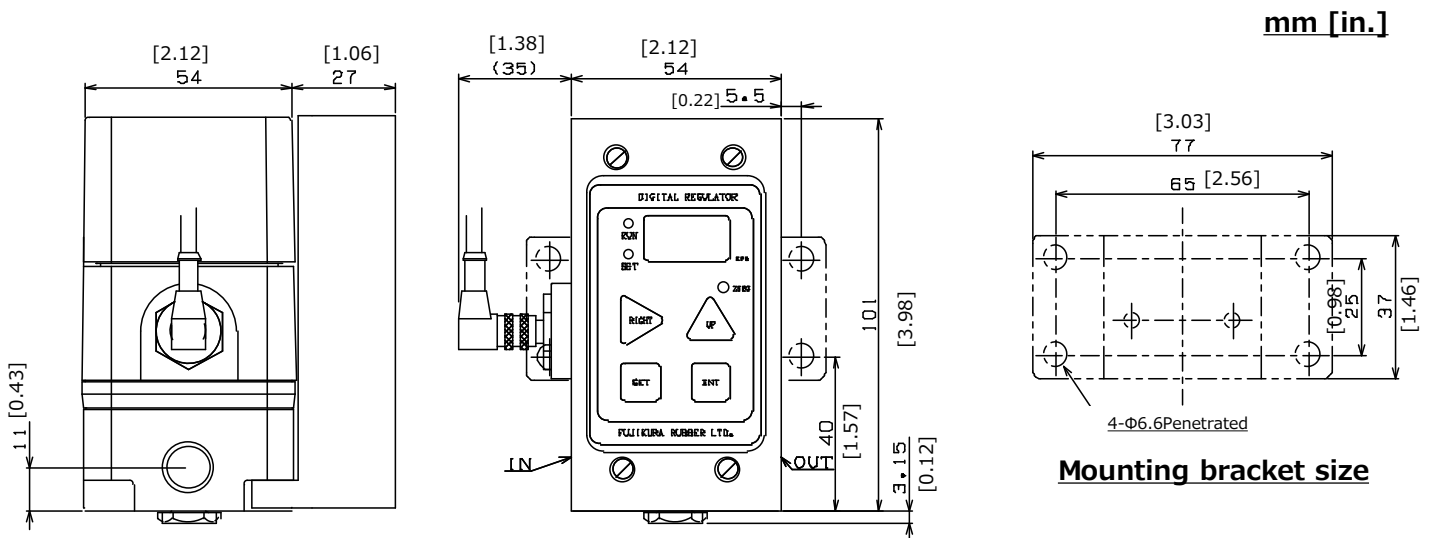


FUJIKURA COMPOSITES

■ Characteristic



■ Size



**FUJIKURA
COMPOSITES**

Contact us

Control Equipment

Head office: TOC Ariake East Tower 10F, 3-5-7 Ariake,
Koto-ku, Tokyo, Japan 135-0063

TEL +81-3-3527-8573

E-mail: seigyotoiawase.en@fc.fujikura.co.jp

URL: <http://www.fujikura-control.com/>